

**REDISUITE**  
PRE-ENGINEERED BLAST-RESISTANT STRUCTURES



TESTED FOR LIFE

## REDISUITE FEATURES AND OPTIONS:

**Each GENERAL PURPOSE building comes fully equipped with:** Redundant placement of steel floor, wall and ceiling members covered with 10-gauge steel panels ▪ Acoustical ceiling tiles ▪ Two steel-reinforced doors ▪ ISO lift and tie down points at each corner ▪ Fiber-reinforced plastic walls ▪ Vinyl, non-slip flooring tiles ▪ LED lighting ▪ One 3" port for communication services, one 2½" port for electrical ▪ Standard Cat6 wiring with RJ45 outlets for phone or data ▪ Fiberglass insulation ▪ Industrial grade HVAC unit(s) ▪ Smoke/carbon monoxide detectors ▪ ABC fire extinguishers ▪ Exit signs with emergency lighting ▪ Exterior industrial coating, in your choice of five colors ▪ **Class 1 Div 2 options are also available**



### GALLEY

Two options offer kitchen space alongside open areas for use as a break room or lounge. Each is equipped with a sink, space for refrigerator and plenty of cabinets.



### LOCKERS

Our locker room configuration offers a bathroom, alongside spacious rows of lockers and benches, giving everyone their own secure space with the safety of blast resistance.



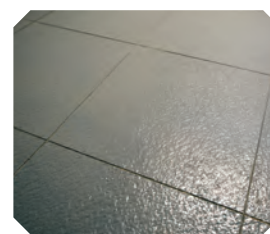
### RESTROOM FACILITIES

With three configurations that offer restroom space, these facilities come standard with sink and toilet plumbed to a wet wall for easy access.



### WORKSPACES

Whether you need a large open workspace, divided offices or a line of efficient workstations, we have you covered with these blast resistant, ready to go options.



### INTERLOCKING POLYVINYL TILES

All interior components are made to endure harsh climates and stay put in blast events. The industrial, interlocking vinyl tiles are resistant to buckling under extreme temperatures.

## COLOR OPTIONS

RAL 3001 | Carmine Red



RAL 7004 | Signal Grey



RAL 5019 | Capri Blue



RAL 1014 | Ivory



RAL 9010 | Pure White



These ready-to-go designs offer variety and make decision-making easy when you need something fast. Available in a variety of sizes, our RediSuite buildings are pre-engineered to save time and include RedGuard's

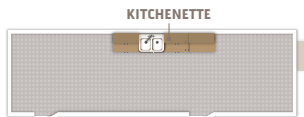
## REDISUITE 12 480 ft<sup>2</sup> 5,280ft<sup>3</sup>

Our single section 12' x 40' x 11' buildings are available in eight standard options that our customers frequently ask for. Workstations, kitchens, restrooms, lockers, or even a large open space are available. Each option includes two external blast-resistant doors and one wall mount HVAC unit.



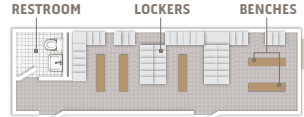
12 SR

12W x 40L x 11H • Single Restroom



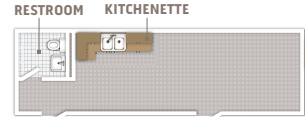
12 SK

12W x 40L x 11H • Single Kitchenette



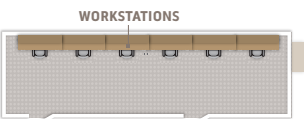
12 RL

12W x 40L x 11H • Restroom Lockers



12 RK

12W x 40L x 11H • Restroom Kitchenette



12 WS

12W x 40L x 11H • Workstations



12 SO

12W x 40L x 11H • Single Office



12 DO

12W x 40L x 11H • Double Office

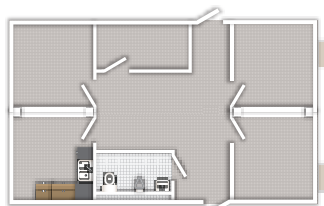


12 OP

12W x 40L x 11H • Open Plan

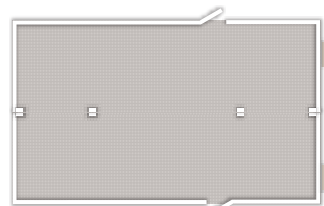
## REDISUITE 24 960 ft<sup>2</sup> 10,560ft<sup>3</sup>

This 24' x 40' x 11' multi-section has ample space. It comes standard with either an open floorplan or a divided floorplan with three open rooms, a kitchen and a large open area in the center. Each floorplan includes two external blast-resistant doors and two multi-zone, split system HVAC units.



24 RK0

24W x 40L x 11H • Restroom Kitchen & Office



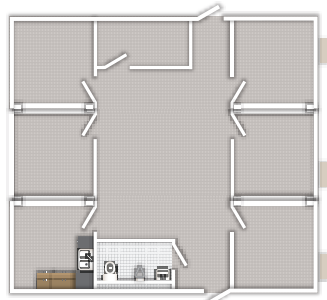
24 OP

24W x 40L x 11H • Open Plan

industry-leading safety specifications. Available in 4 sizes and 14 total floor plans, all adhere to API 752/753 with an 8 psi/200 ms rating, meeting the criteria for a medium response by the American Society of Civil Engineers.

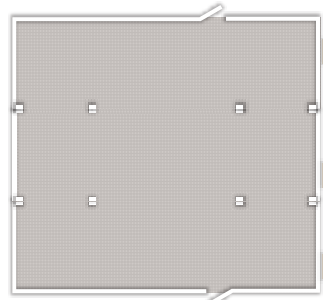
### REDISUITE 36 | 1,440 ft<sup>2</sup> | 15,840ft<sup>3</sup>

The next step up is our 36' x 40' x 11' multi-section. It comes standard with either an open floorplan or the divided floorplan with five open rooms, a kitchen and a large open area in the center. Each floorplan includes two external blast-resistant doors and three multi-zone, split system HVAC units.



36 | RKO

36W x 40L x 11H • Restroom Kitchen & Office

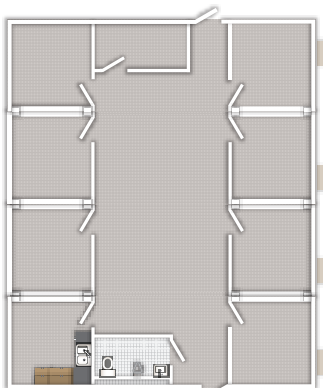


36 | OP

36W x 40L x 11H • Open Plan

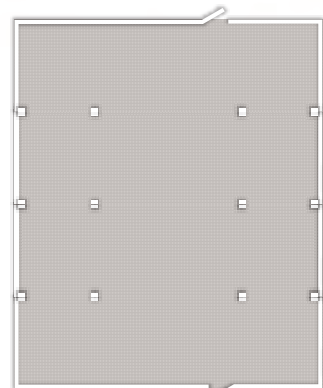
### REDISUITE 48 | 1,920 ft<sup>2</sup> | 21,120ft<sup>3</sup>

Our largest standardized multi-section is 48' x 40' x 11' with either an open floorplan or the divided floorplan with seven open rooms, a kitchen and a large open area in the center. Each floorplan includes two external blast-resistant doors and four multi-zone, split system HVAC units.



48 | RKO

48W x 40L x 11H • Restroom Kitchen & Office



48 | OP

48W x 40L x 11H • Open Plan

**Our innovative RediSuite line now offers Class 1 Division 2 comfort systems, because in areas classified as hazardous, every second of clean air counts. These units, available in four sizes and multiple configurations, include a pad mounted HVAC unit with a fresh air stack. The HVAC units have built-in automatic controls with added pressurization and the capability to provide safe air, maintain positive pressure and purge air flow. Meets NFPA 496 (Ch 7), Type Z control room requirements. HVAC has protective coatings for prolonged cabinet and chassis life.**



## THREAT MITIGATION FOR PEACE OF MIND

### REDISUITE™

Pre-engineered, custom quality blast-resistant buildings.

### SAFETYSUITE®

Fully customized, blast-resistant structures.



Rugged mobile offices, storage, and shelters for nonblast needs.



Hardened structures with blast and ballistic resistance.

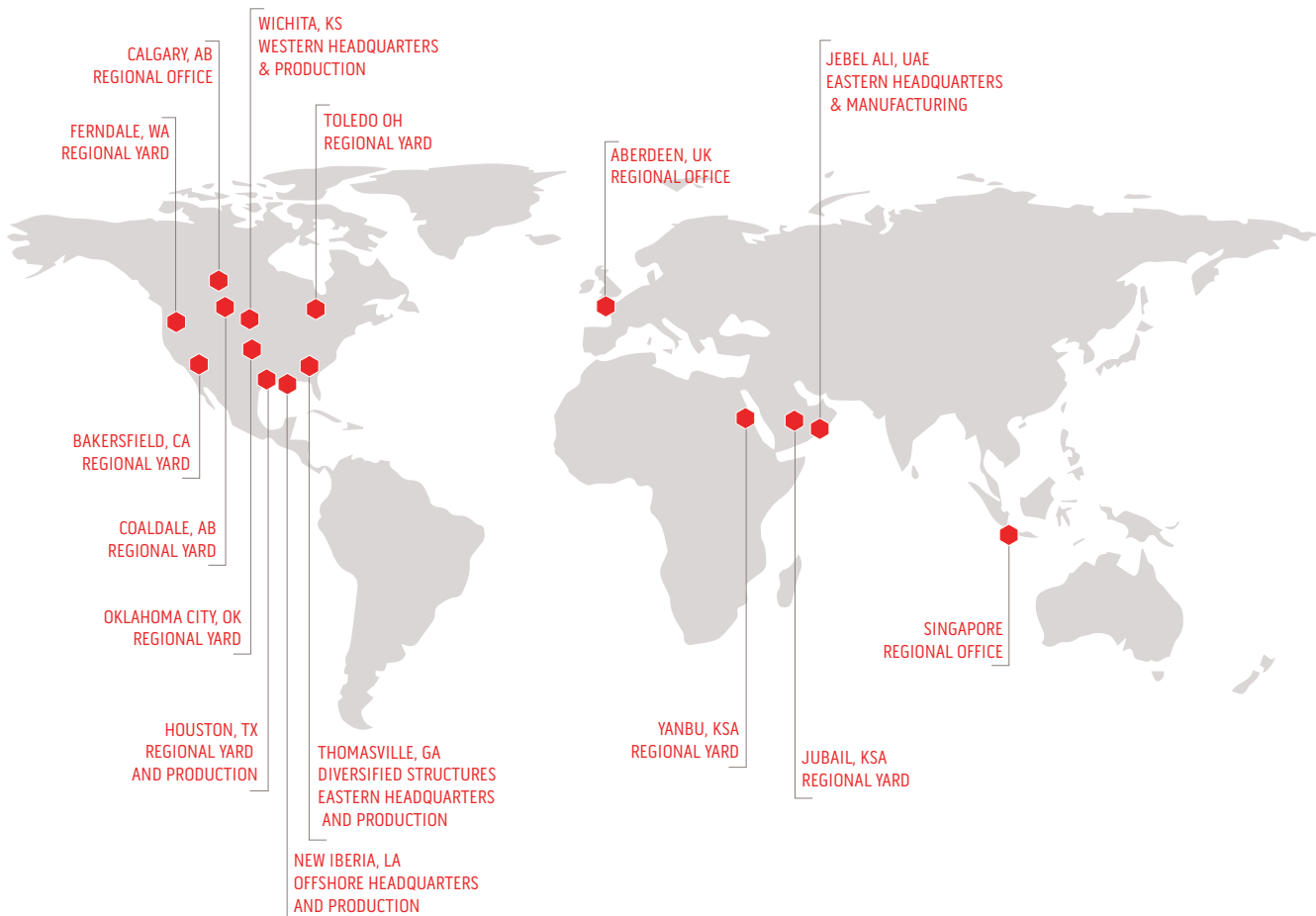
### LEASEFLEET®

North America's largest blast-resistant fleet.



Onshore and offshore modular buildings of all kinds.

## OUR GLOBAL FOOTPRINT



At RedGuard, we focus on five key disciplines: concept, design, build, installation and operation. We have already earned the respect of oil and gas industry professionals throughout the world. As the leading authority in the area of modular safe space, we are proud to serve the world's largest corporations and look forward to earning your business and your trust.

### CONTACT US

ONLINE | [REDGUARD.COM](http://REDGUARD.COM)

TOLL-FREE | 855.REDGUARD

EMAIL | [SALES@REDGUARD.COM](mailto:SALES@REDGUARD.COM)

### OUR GLOBAL FOOTPRINT



**Central U.S.A**  
Wichita, KS  
**Southern U.S.A**  
Baytown, TX

**Gulf Coast U.S.A**  
New Iberia, LA  
**Canada**  
Calgary, Alberta

**Asia**  
Singapore 508988  
**Middle East**  
Dubai, United Arab Emirates

**Europe**  
Aberdeen, United Kingdom  
Rotterdam, The Netherlands

