

# CP #1439 LAB/OPERATOR SHELTER

## BUILDING SPECS AND FEATURES

**Building Size:**  
24' x 40' x 12'

**Protection Level:**  
5 PSI/200 MS

### **Building Details:**

This building is part of a plant expansion project in the Houston area. The structure worked so well for the customer that after the initial order, an additional building was requested. It is being used as a combination of a lab for sample testing, and a permit/operators shelter. It is equipped with a Stainless Steel C1D2 Pressurized HVAC, Gas Detection, Fume Hood, Laboratory Grade Cabinets, Chemical Resistant Countertops, and built in work stations.



RedGuard is the leading authority in the area of modular safe space, and we are proud to have some of the world's largest corporations as our customers. While we can't always share their names, we share some of the custom projects that they have entrusted to us. We are dedicated to the concept, design, build, install and operation of blast-resistant buildings. We have earned the respect of engineers, architects, contractors, planners and other oil and gas industry specialists throughout the world.

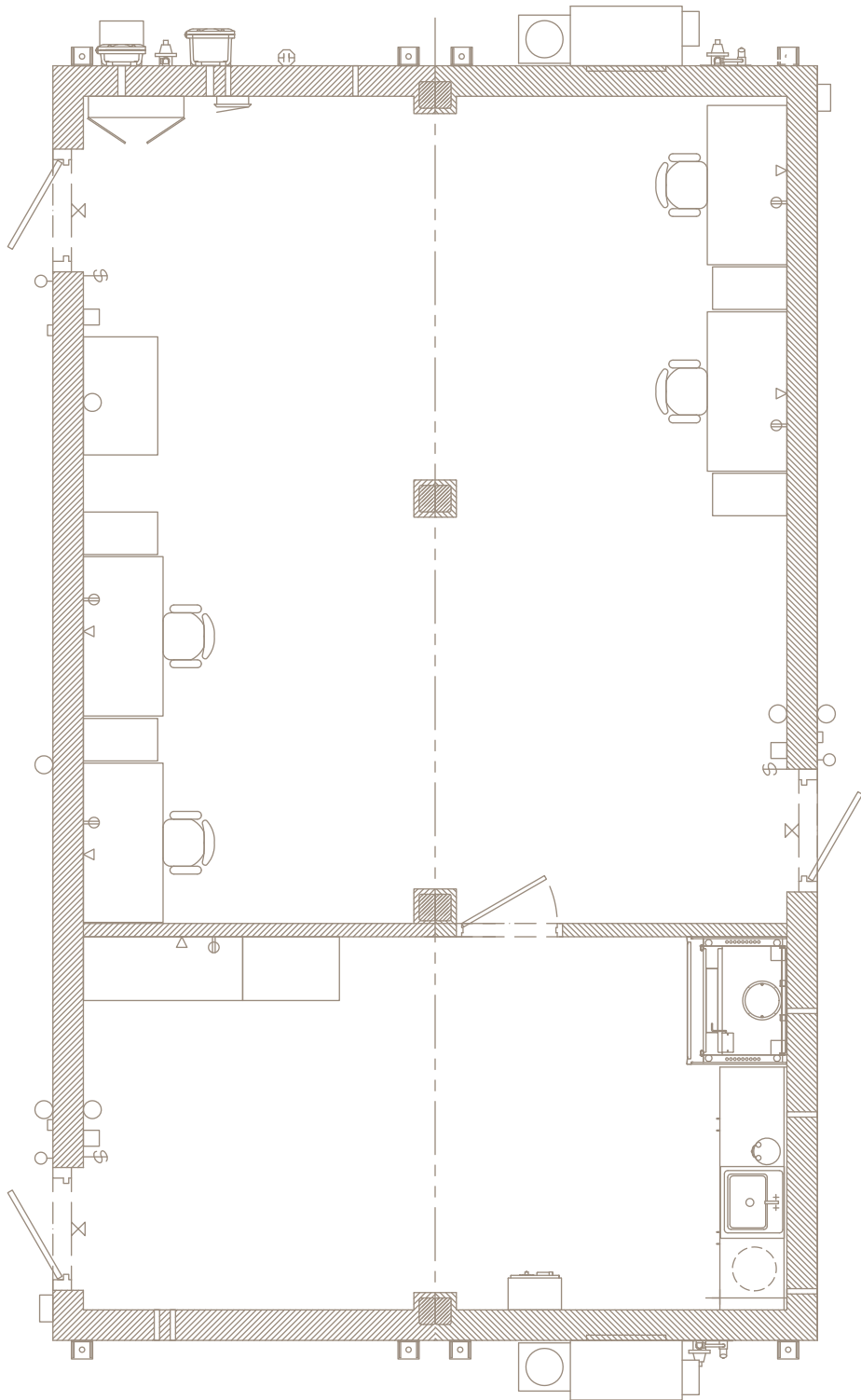
**CONTACT US TODAY**

**TOLL-FREE AT 855.REDGUARD OR EMAIL SALES@REDGUARD.COM**

[redguard.com](http://redguard.com)



REV.010118



CONTACT US TODAY

TOLL-FREE AT 855.REDGUARD OR EMAIL SALES@REDGUARD.COM

[redguard.com](http://redguard.com)



REV.010118