

This building is an Operation Field Center for a large refinery in British Columbia. In addition to the building's unique size, it was designed and engineered to be placed directly on top of an existing structure that was built by another manufacturer.

### BUILDING SPECS AND FEATURES

**Building Size:**

24' X 60' X 12.6' / Double width unit

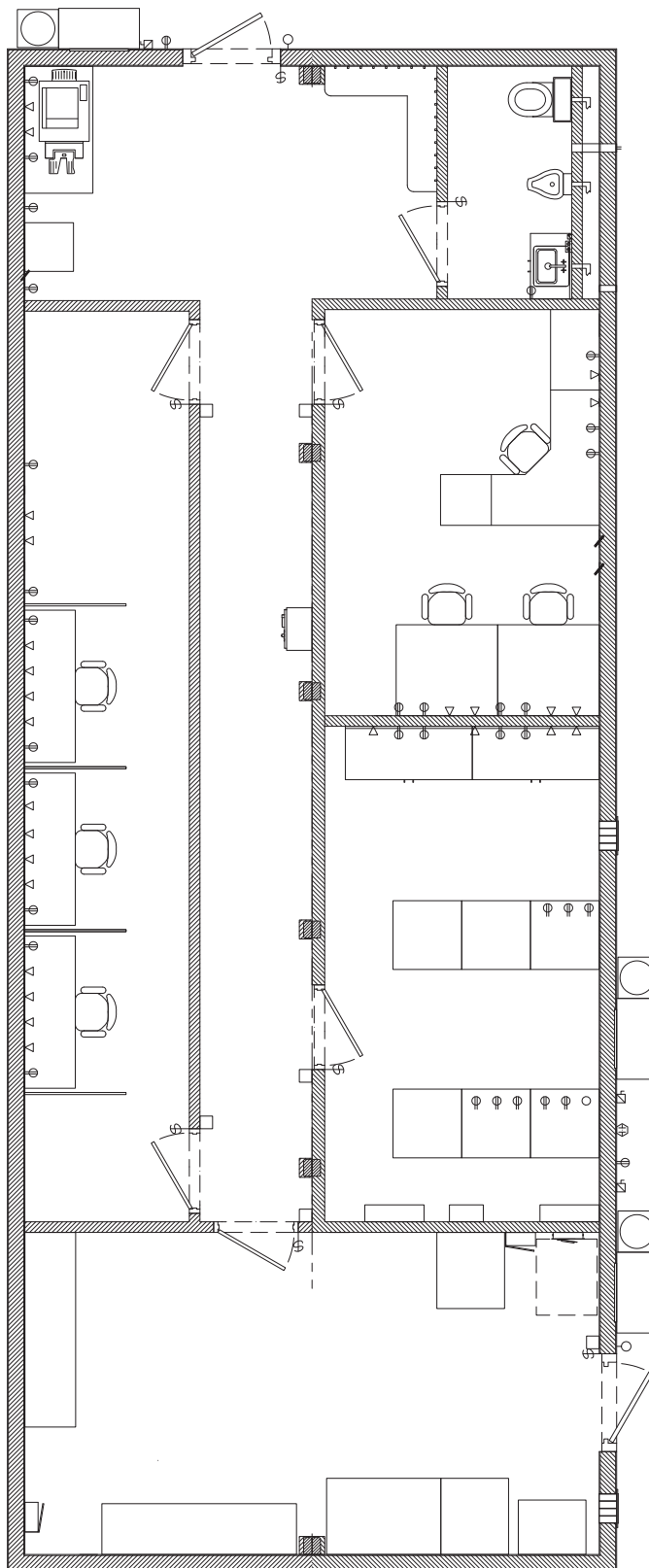
**Protection Level:**

5 PSI / 150 MS



**Why RedGuard?**

RedGuard is the leading authority in blast resistance and a world leader in providing safe, customizable and scalable modular buildings. RedGuard has aligned with industry-leading strategic partners who are known across the globe, and with a third party engineering firm recognized as the foremost authorities on blast engineering. To save time and money, and to mitigate hazard areas as soon as they are identified, RedGuard can provide you with immediate turnkey solutions, or we can custom engineer a solution based on site requirements.



CONTACT US

ONLINE | [REDGUARD.COM](http://REDGUARD.COM)

TOLL-FREE | 855.REDGUARD

EMAIL | [SALES@REDGUARD.COM](mailto:SALES@REDGUARD.COM)



#### OUR GLOBAL FOOTPRINT

**Central U.S.A**  
Wichita, KS  
**Southern U.S.A**  
Baytown, TX

**Gulf Coast U.S.A**  
New Iberia, LA  
**Canada**  
Calgary, Alberta

**Asia**  
Singapore 508988

**Europe**  
Aberdeen, United Kingdom  
Rotterdam, The Netherlands

